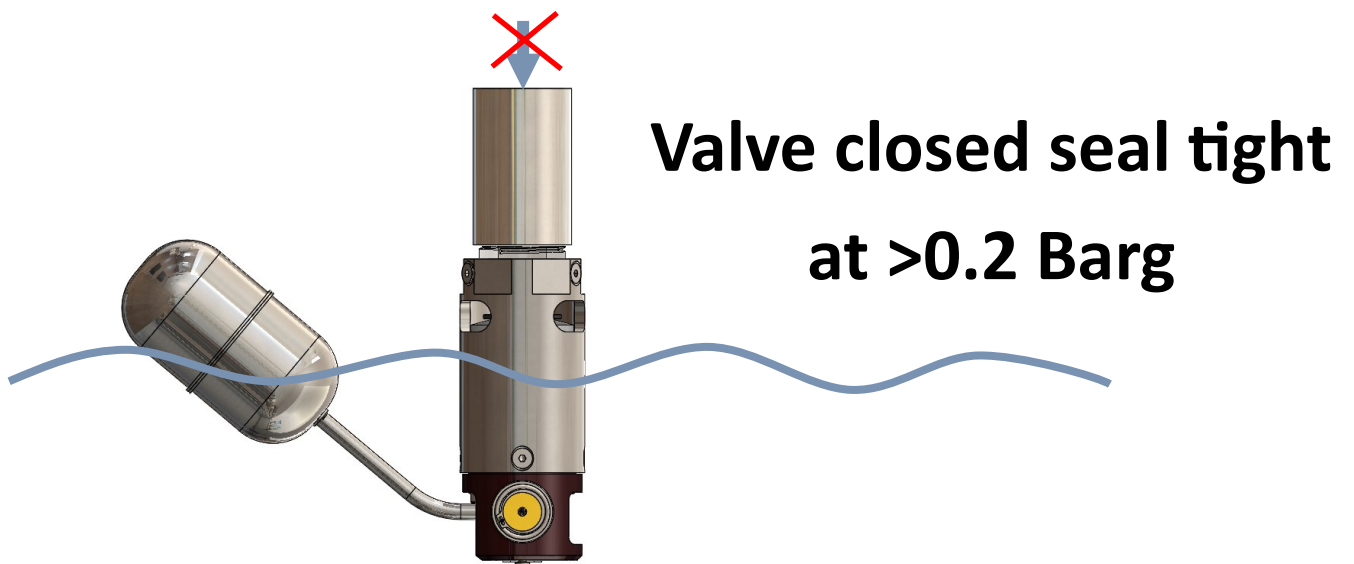
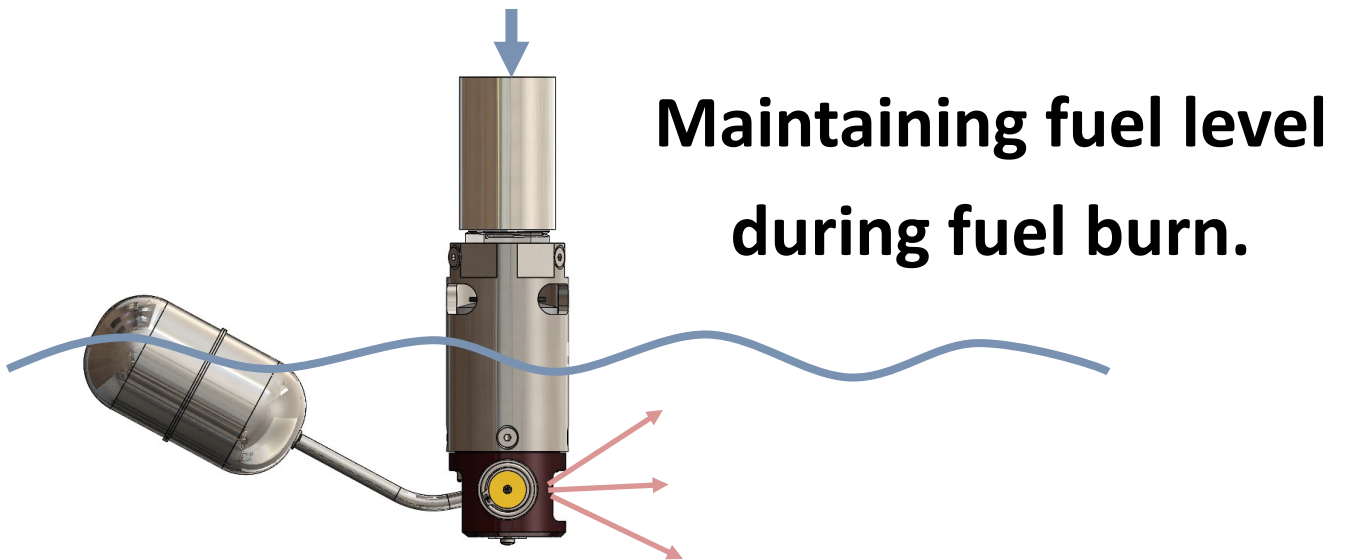
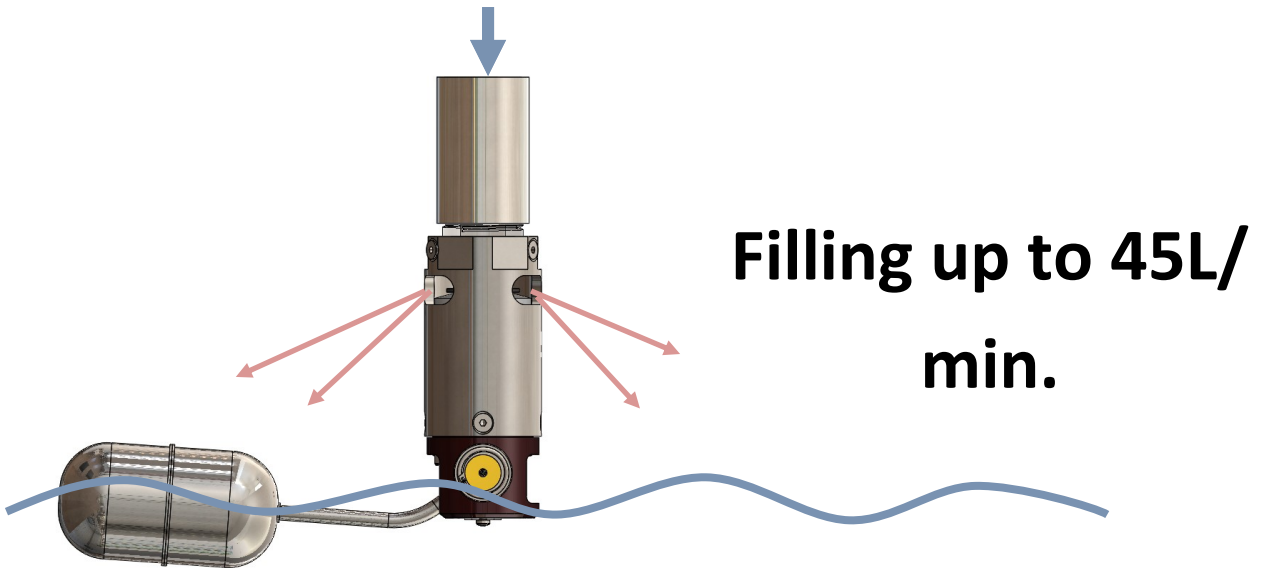


FV48 1" Float operated valve.

For Diesel, Coolant, Light Oils, Kerosene and non aggressive chemicals.

Applications include -

Overfill protection and level control of day tanks, storage tanks, process control and hydraulic fracturing unit refuelling.

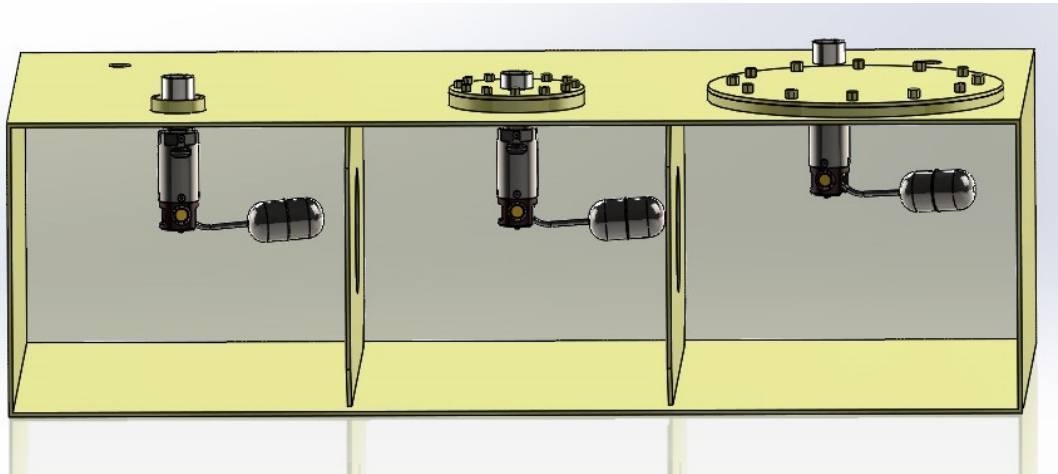


Typical method of installing a FV48 valve

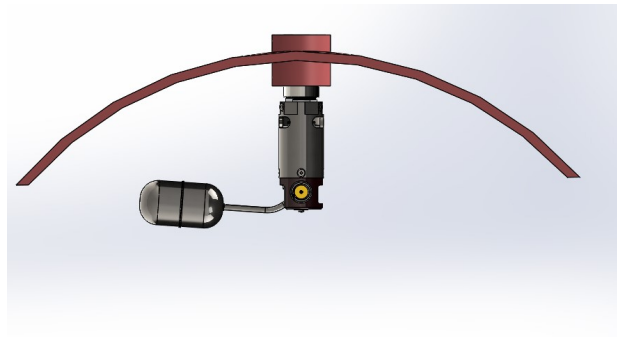
Thru a 2" threaded BSP
Or NPT pipe socket

Flanged

Access hatch (Manway)



Cylindrical tank



Installation.

Install and operate valve vertically.

Connection: 1" NPT.

Operating parameters.

Max operating pressure 5 Barg

Flow rate up to 45 L/min

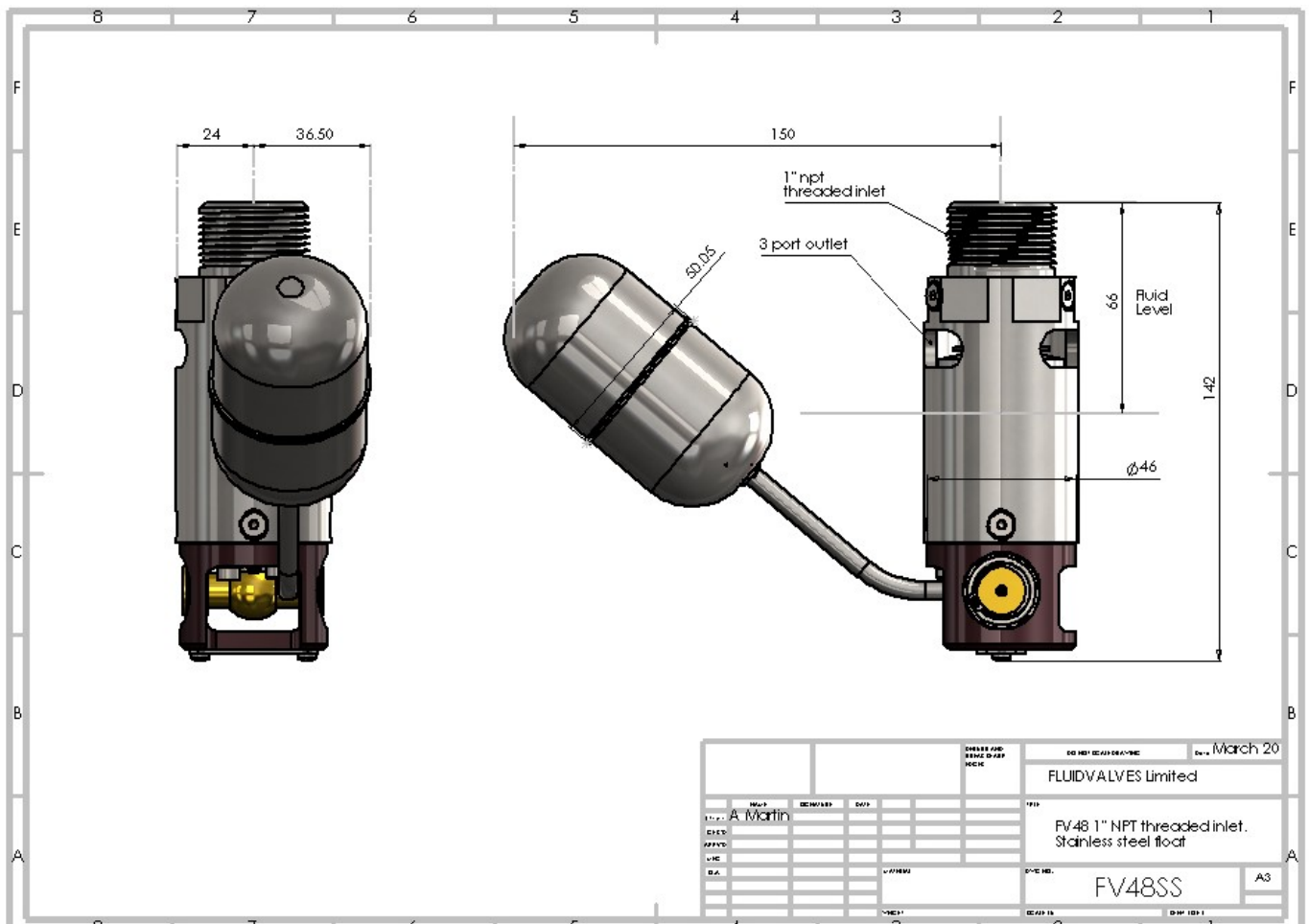
Temperature - up to 60C

Materials:

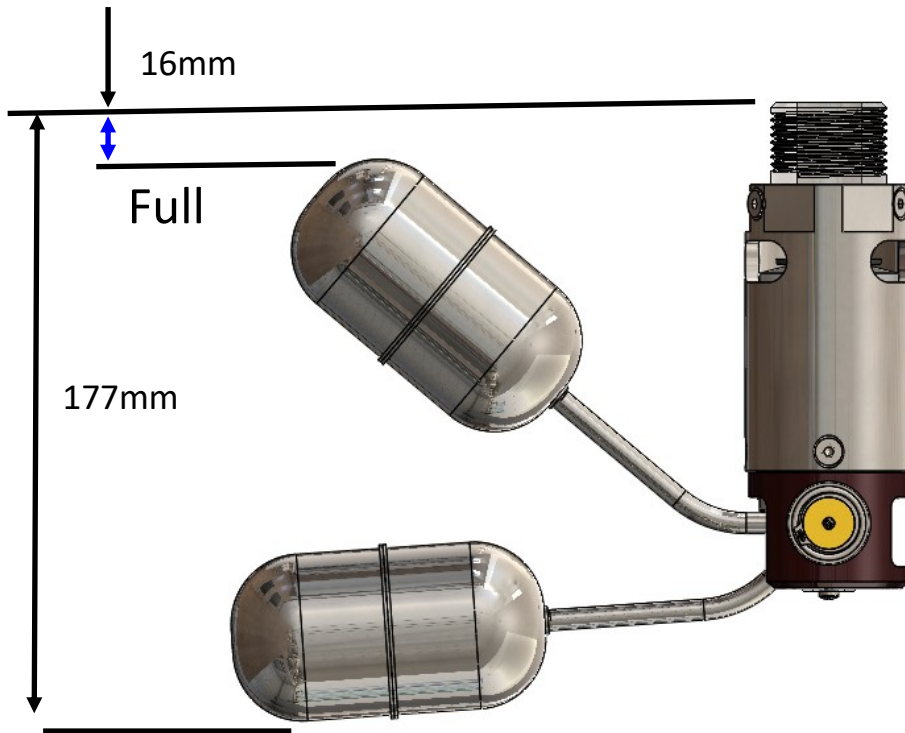
SS 303, SS 304, VITON, ACETAL, Brass.

Mass:

829.5 grams. **Volume:** 162991.50 square millimetres.



Installation clearances



Fully open

